

茲證明城市規劃委員會已根據城市規劃條例第4A(3)條的規定而於  
二零零七年六月八日批准本總綱發展藍圖。  
I hereby certify, as required under S.4A(3) of the Town Planning Ordinance, that this  
Master Layout Plan was approved by the Town Planning Board on 8. 6. 2007.

signed Thomas CHOW

Chairman, Town Planning Board

周達明

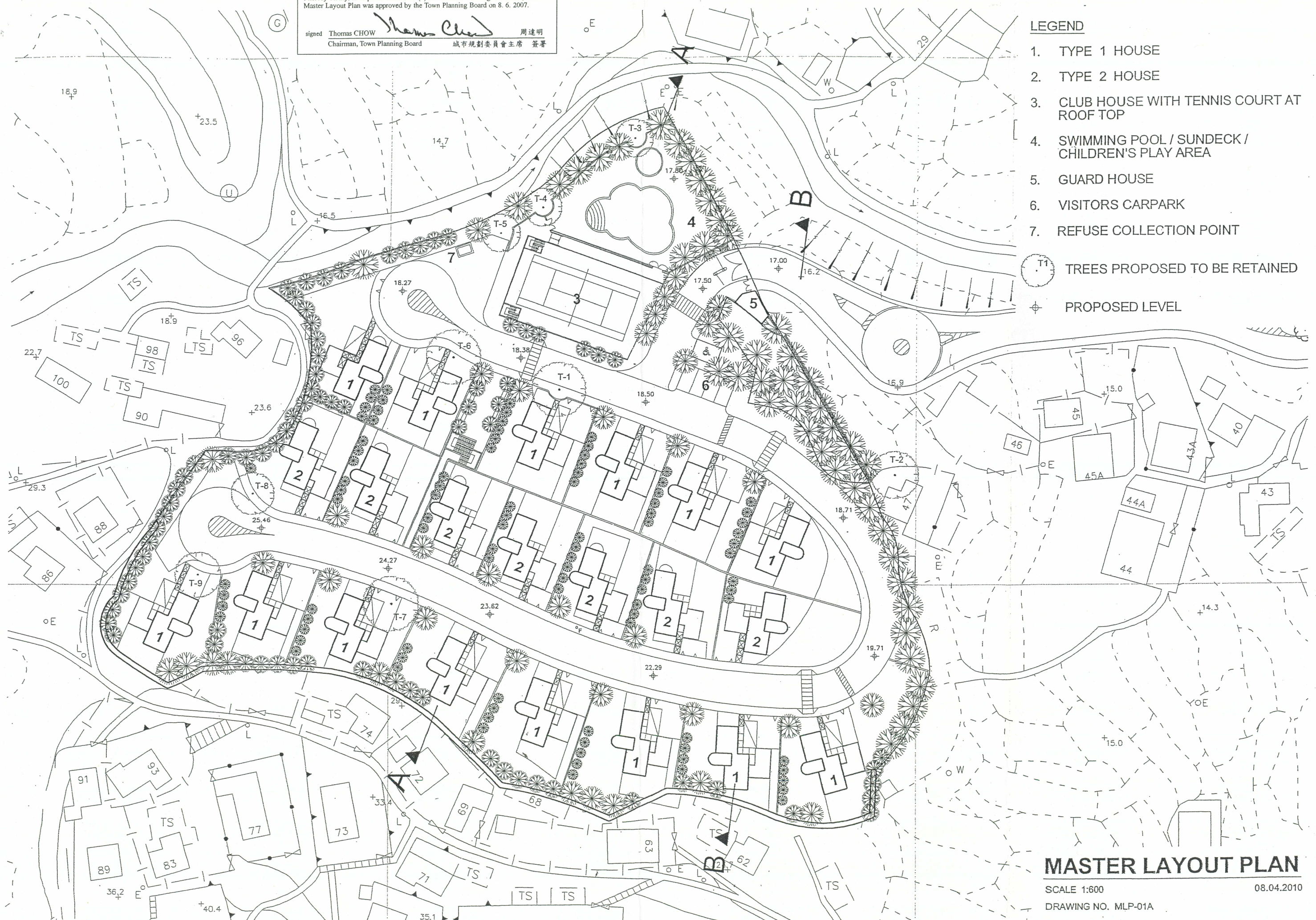
城市規劃委員會主席 簽署

## LEGEND

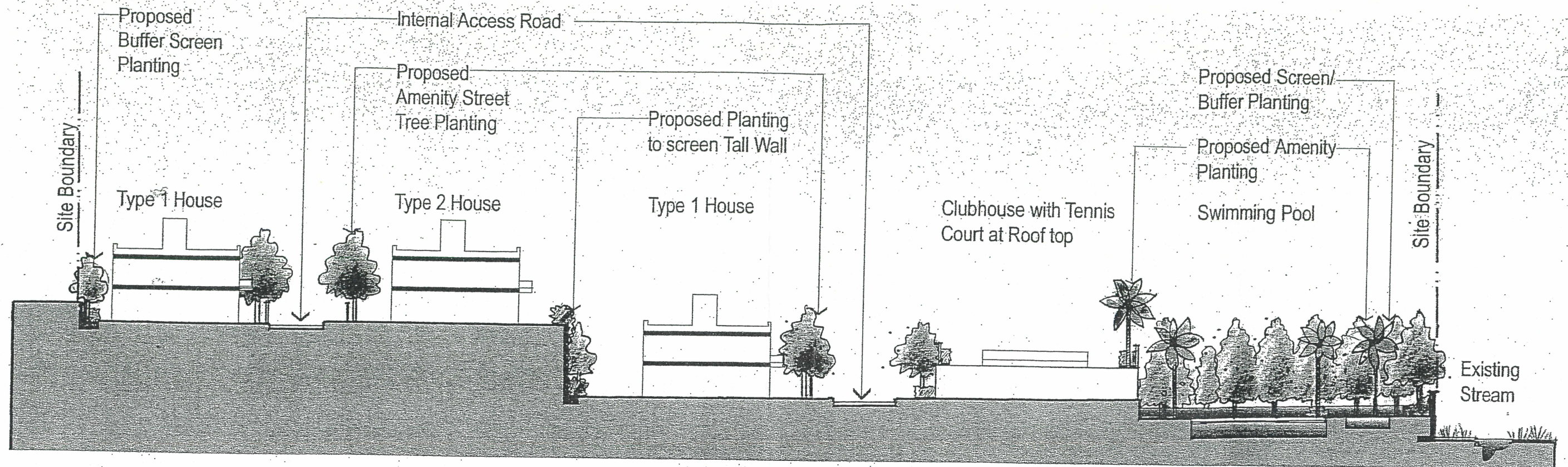
1. TYPE 1 HOUSE
2. TYPE 2 HOUSE
3. CLUB HOUSE WITH TENNIS COURT AT ROOF TOP
4. SWIMMING POOL / SUNDECK / CHILDREN'S PLAY AREA
5. GUARD HOUSE
6. VISITORS CARPARK
7. REFUSE COLLECTION POINT

T1 TREES PROPOSED TO BE RETAINED

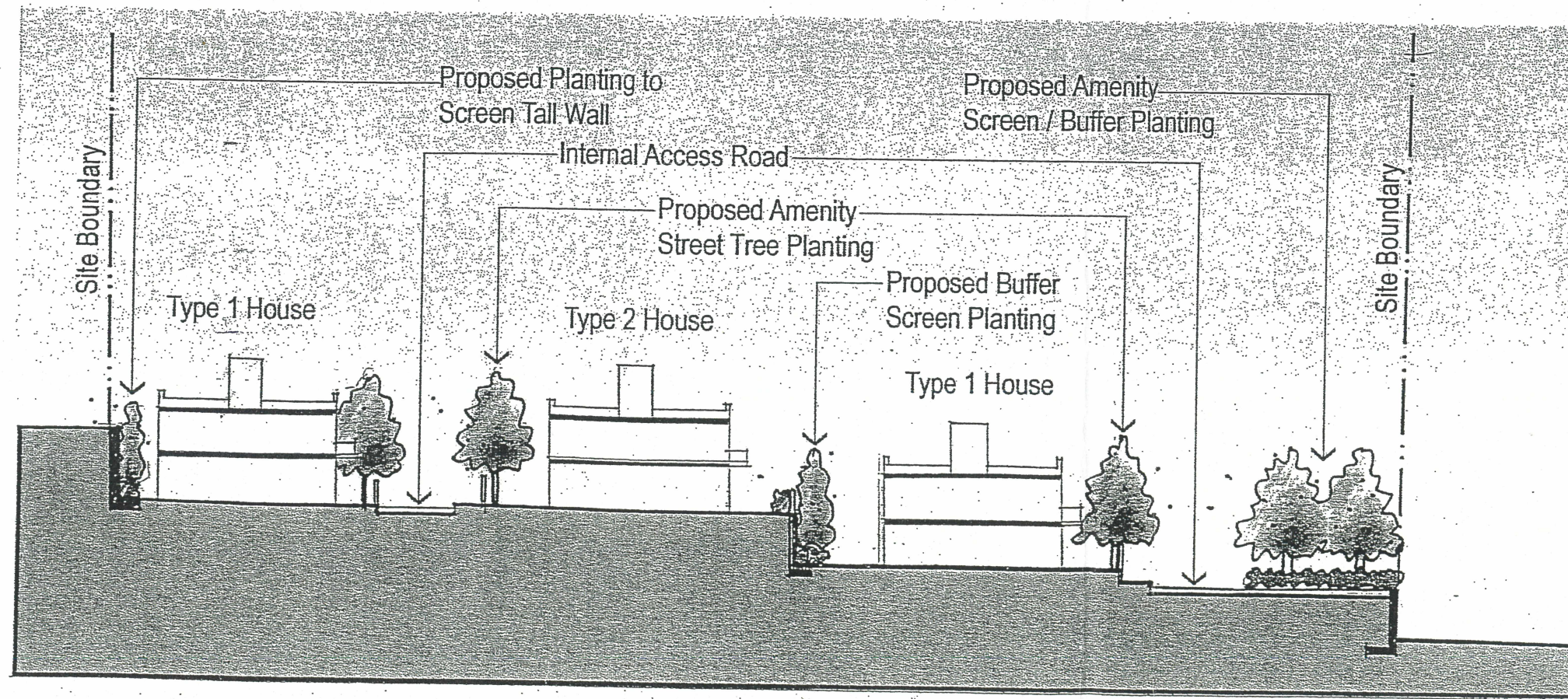
PROPOSED LEVEL



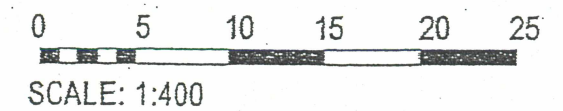




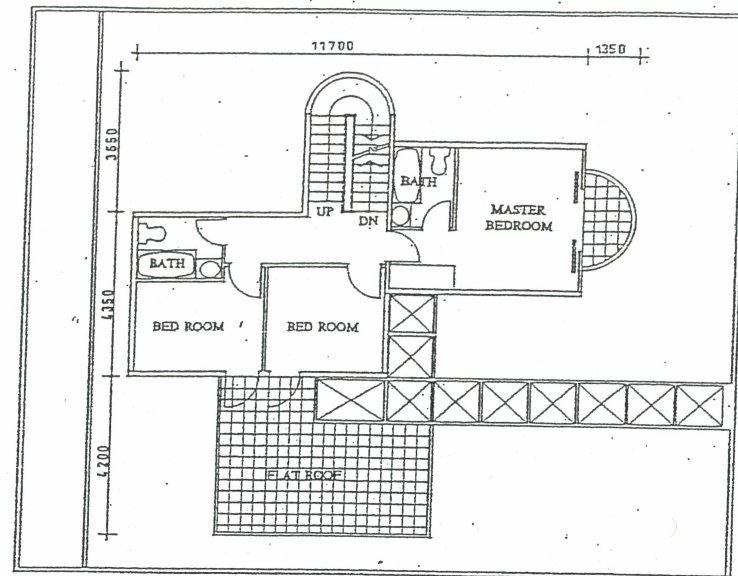
SECTION A-A



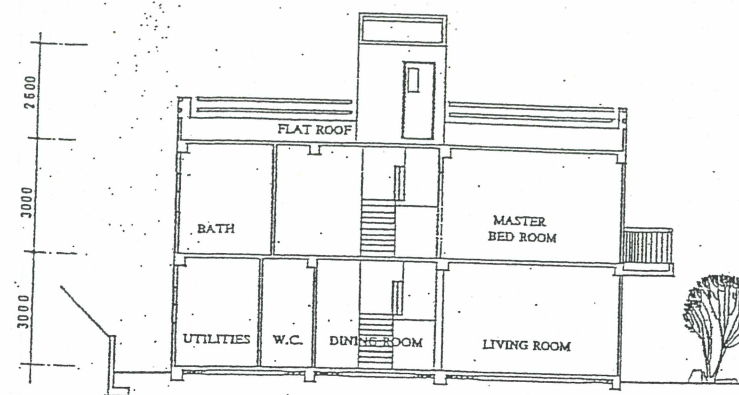
SECTION B-B



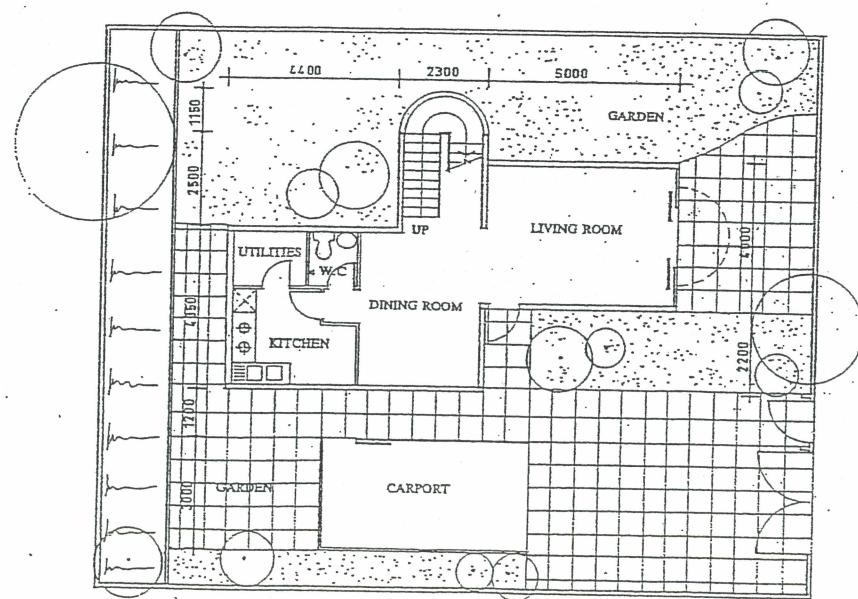




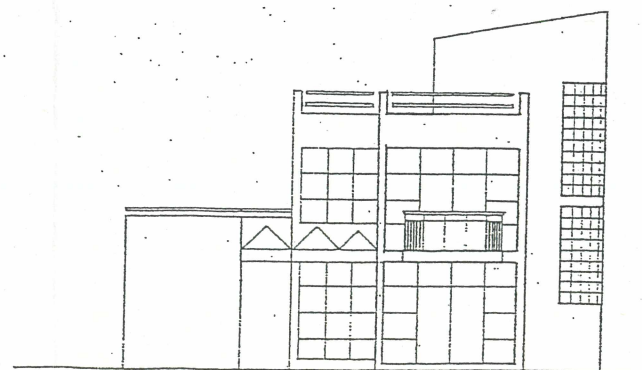
1 ST FLOOR PLAN



SECTION



GROUND FLOOR PLAN

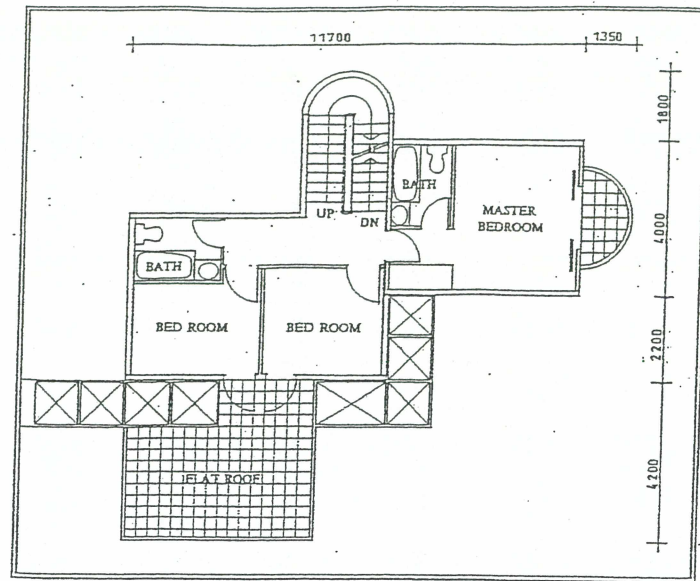


FRONT ELEVATION

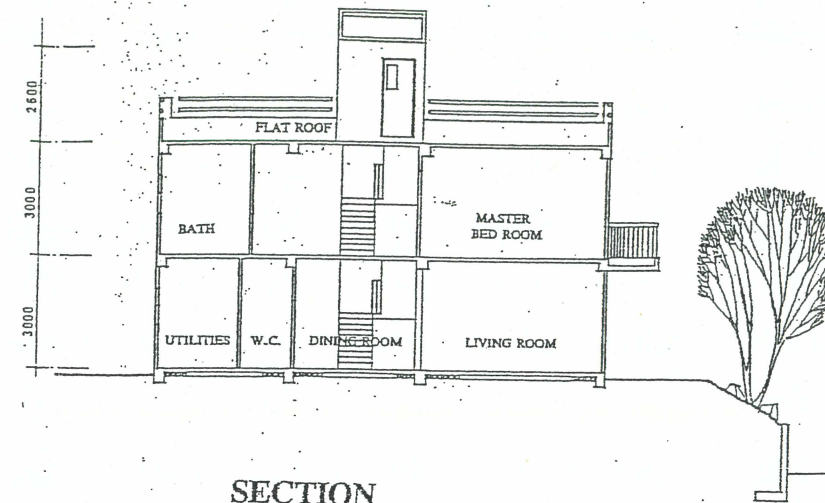


MLP 03

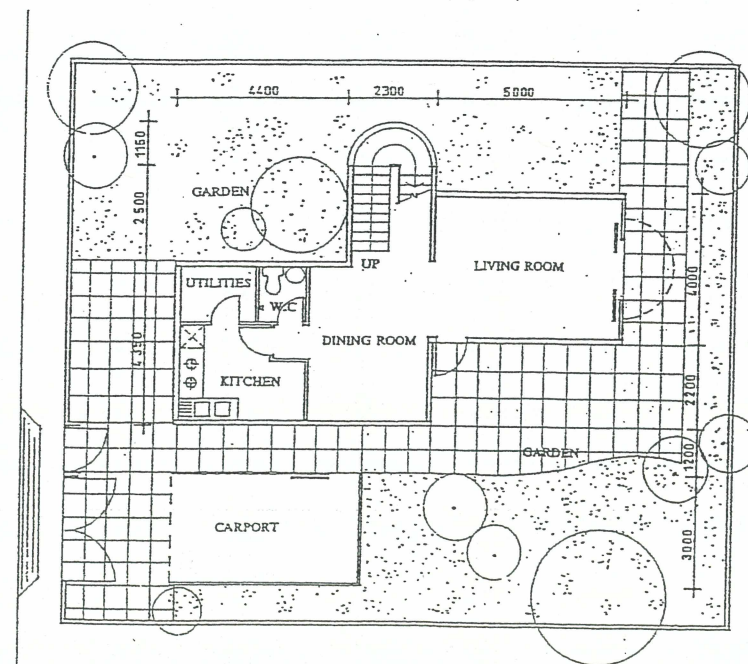
Type 1 House Floor Plans,  
Elevation & Section



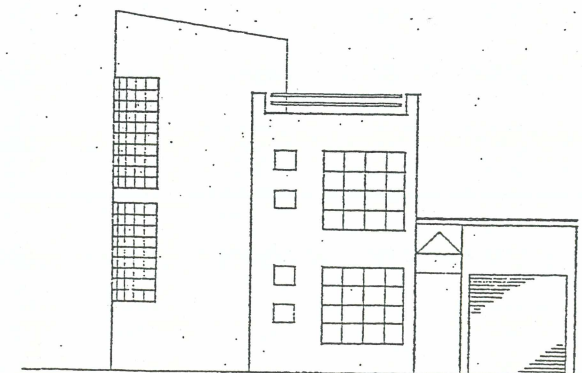
1 ST FLOOR PLAN



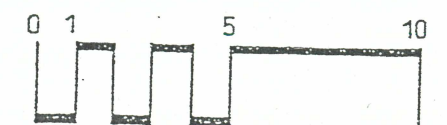
SECTION



GROUND FLOOR PLAN



FRONT ELEVATION



MLP 04

Type 2 House Floor Plans,  
Elevation & Section







**Table 1      Development Schedule**

<b>Zoning</b>		<b>'CDA'</b>
<b>Site Area</b>		1.24 ha
<b>Plot Ratio</b>	<b>Permissible</b>	0.2
	<b>Proposed</b>	0.2
<b>Site Coverage</b>	<b>Permissible</b>	20%
	<b>Proposed</b>	20%
<b>Proposed Residential GFA</b>		2,480m <sup>2</sup>
<b>No. of Units</b>		Type 1 : 14 Type 2 : 7 21Units
<b>Average Unit Size</b>		116.95m <sup>2</sup>
<b>No. of Storey</b>		2
<b>Building Height</b>		6m
<b>GFA of Recreational and Ancillary Facilities</b>	<b>Clubhouse (1 Storey)</b>	350m <sup>2</sup>
	<b>Refuse Collection Point (1 Storey)</b>	12m <sup>2</sup>
	<b>Guardhouse (1 Storey)</b>	20m <sup>2</sup>
	<b>Total</b>	382m <sup>2</sup>
<b>Car Parking Provision</b>	<b>Residents' Car Park</b>	Type 1 Houses : 28 spaces Type 2 Houses : 7 spaces 35 spaces
	<b>Visitors' Car Park</b>	6 spaces
<b>Design Population</b>		74

Note : # Assuming an average occupancy rate of 3.5 persons per unit.



**Table 2    Implementation Programme**

	2009	2010	2011	2012	2013	2014	2015
1. Building Plans Approval		7 months June 2010 					
2. Land Exchange		18 months December 2011 					
3. Site Formation & Foundation				6 months June 2012 			
4. Construction					30 months December 2014 		
5. O.P. and C.C.							6 months June 2015 